

25 700

6 750

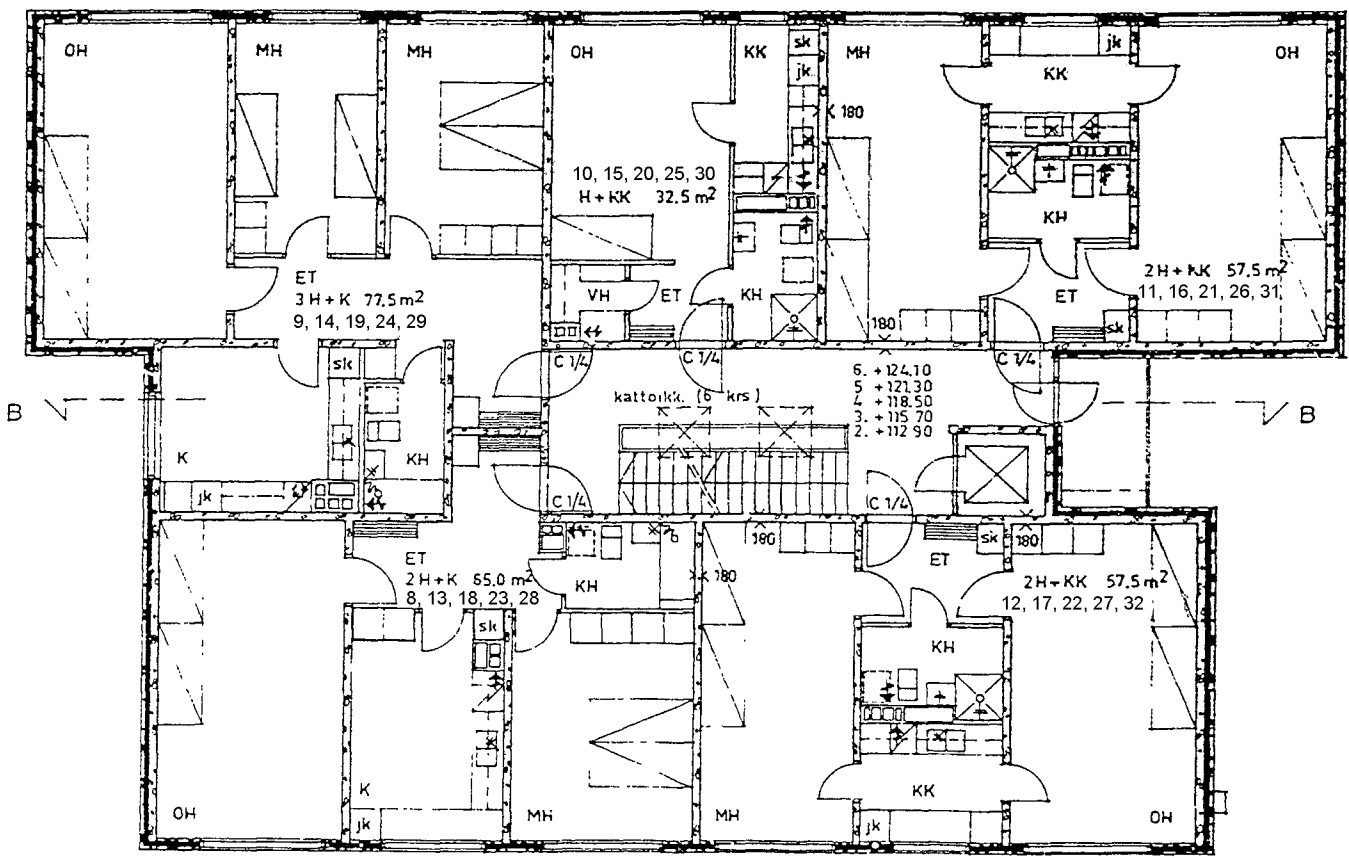
6 750

16 400

9 650

2 900

6 750



B ↙

↘ B

- 6. +124.10
- 5. +121.30
- 4. +118.50
- 3. +115.70
- 2. +112.90

kattoikk. (6 krs)

10, 15, 20, 25, 30
H+KK 32.5 m²

ET
3H+K 77.5 m²
9, 14, 19, 24, 29

2H+KK 57.5 m²
11, 16, 21, 26, 31

ET
2H+K 55.0 m²
8, 13, 18, 23, 28

2H+KK 57.5 m²
12, 17, 22, 27, 32

17 950

3 000

2 350

20 950

2 400