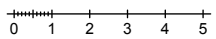
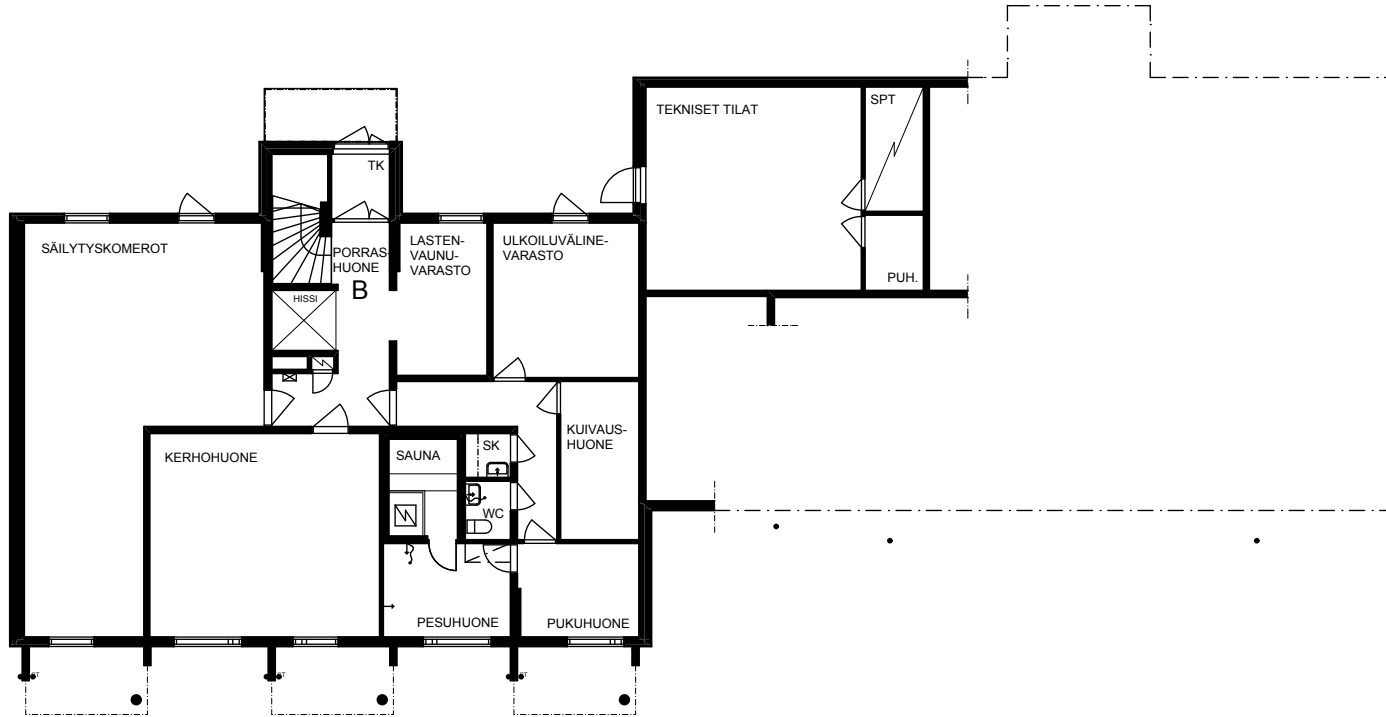
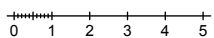
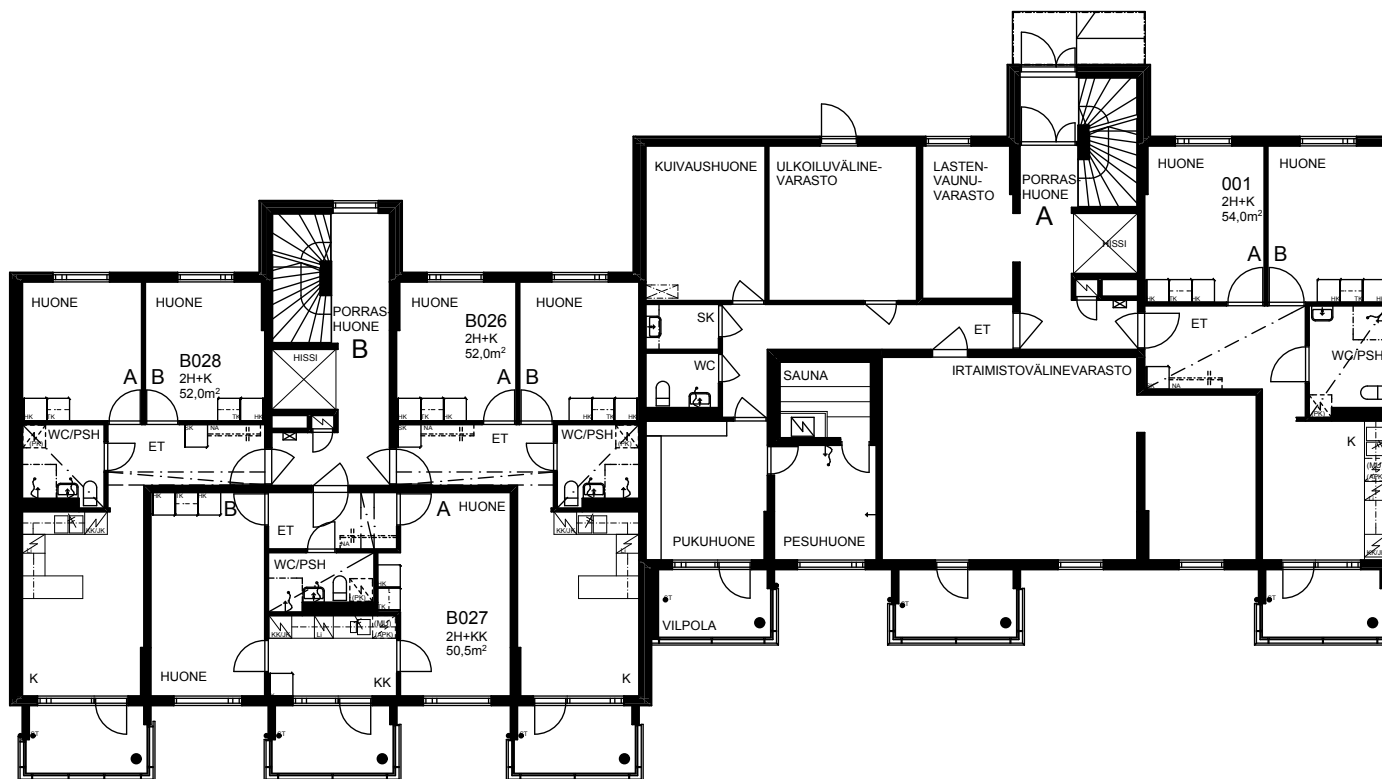


TOAS - PAAWOLA
TALO 1
KELLARIKERROS



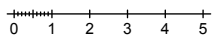
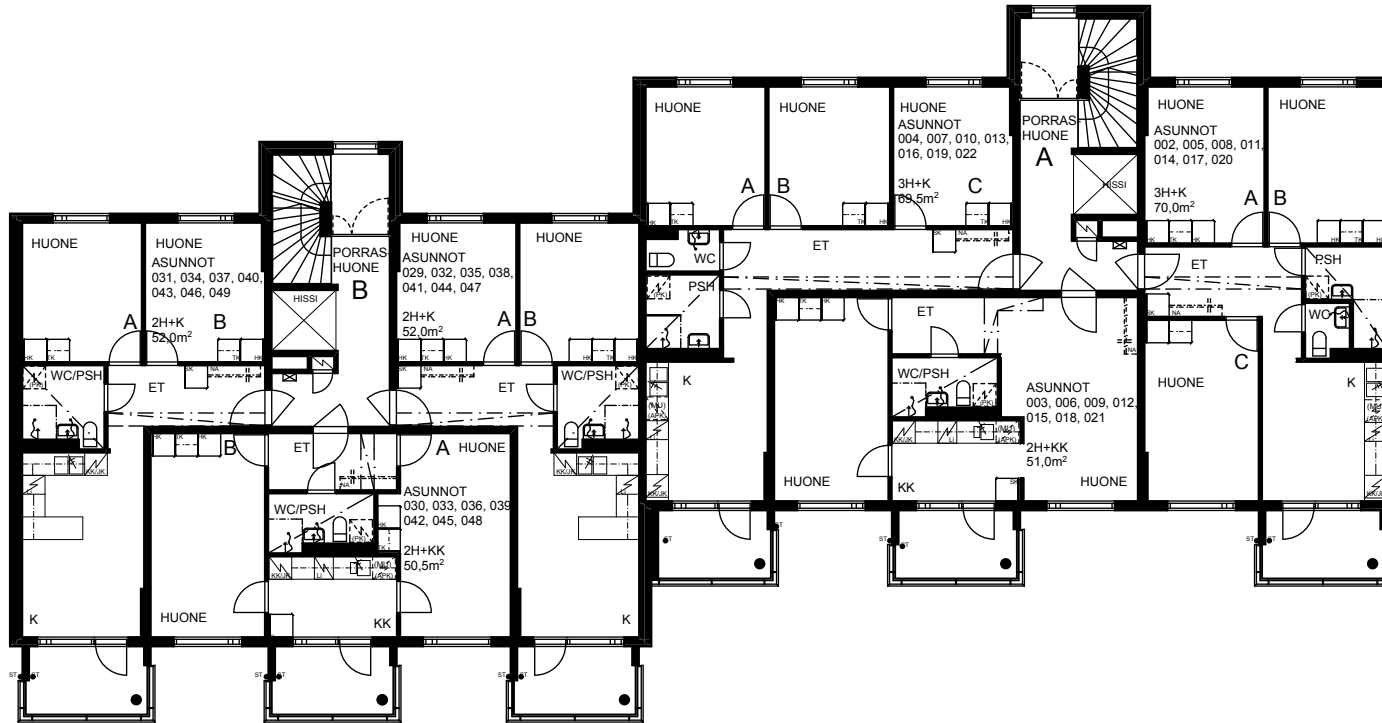
MITTAKAAVA 1:200

TOAS - PAAWOLA
TALO 1
POHJAKERROS



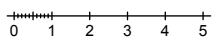
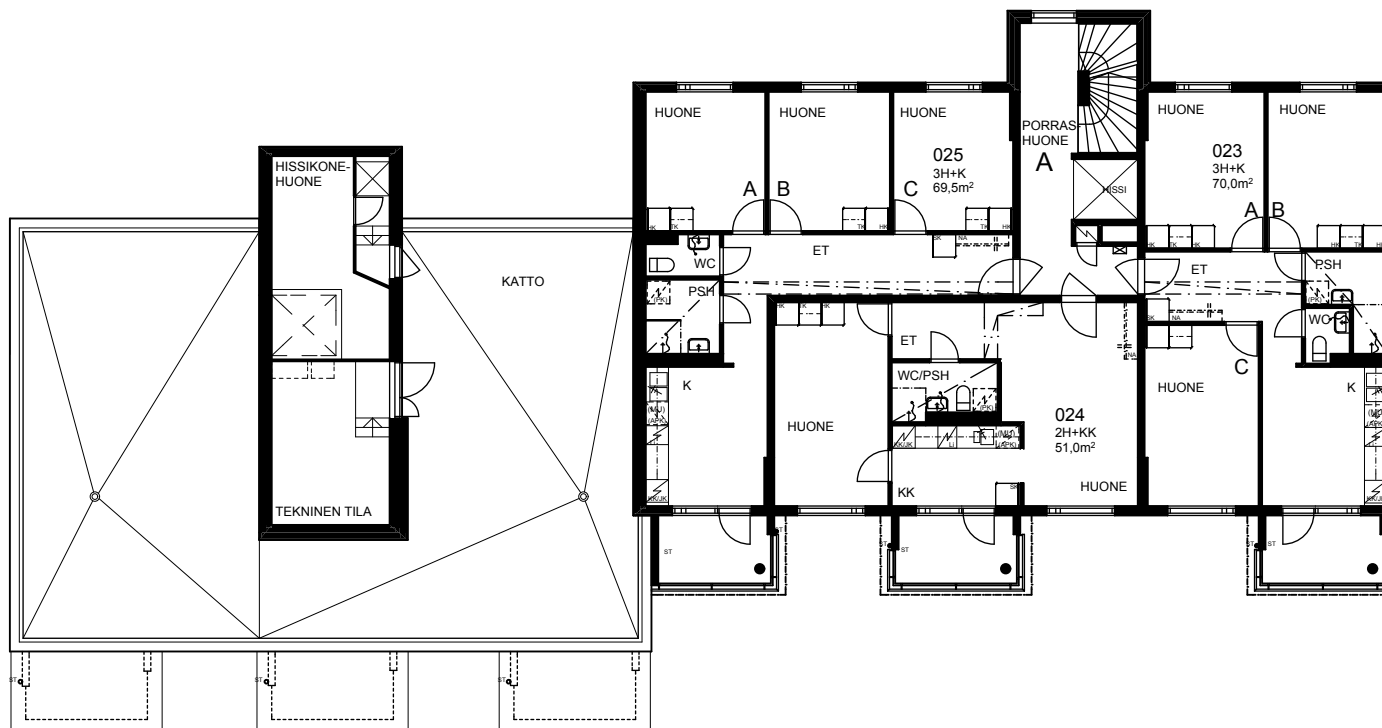
MITTAKAAVA 1:200

TOAS - PAAWOLA
TALO 1
1-7. KERROS



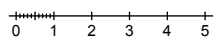
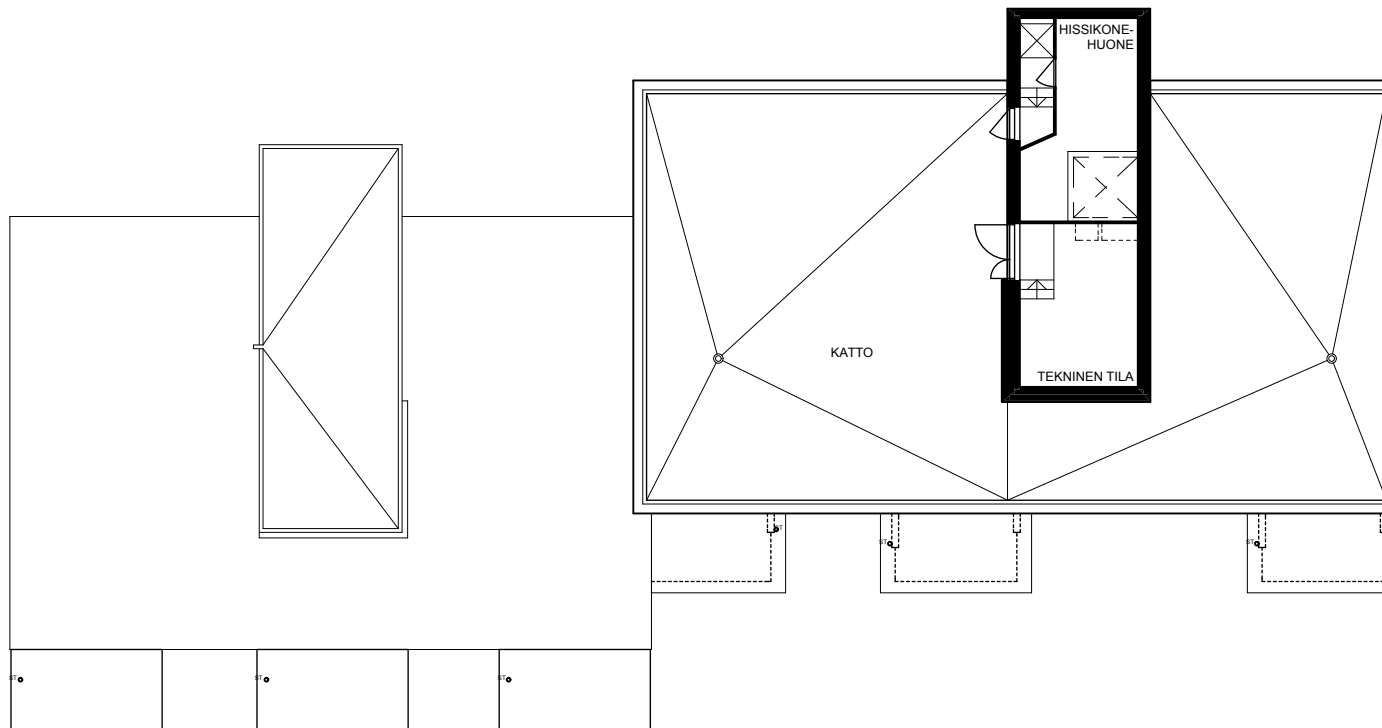
MITTAKAAVA 1:200

TOAS - PAAWOLA
TALO 1
8. KERROS



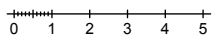
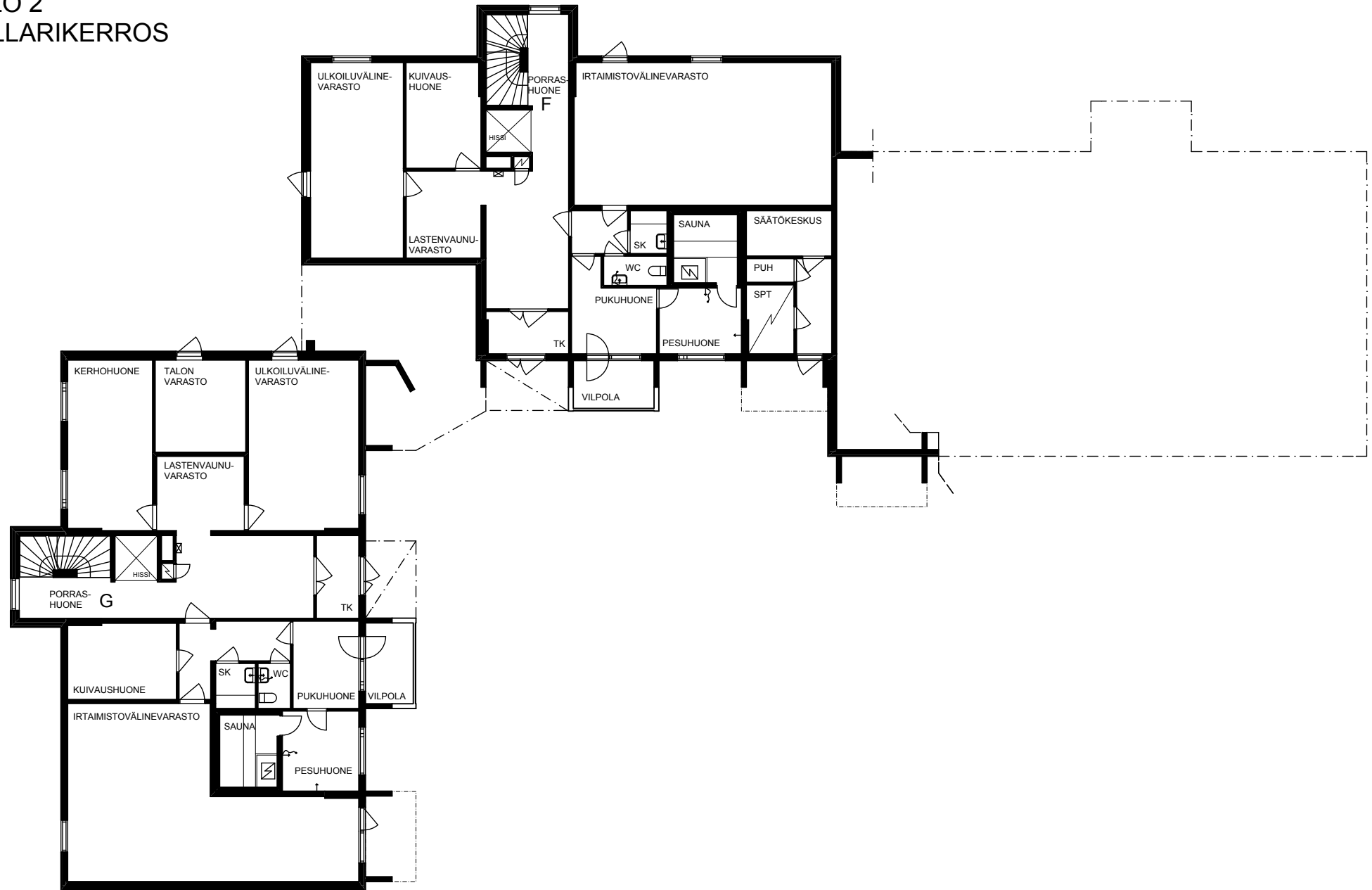
MITTAKAAVA 1:200

TOAS - PAAWOLA
TALO 1
VESIKATTO



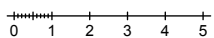
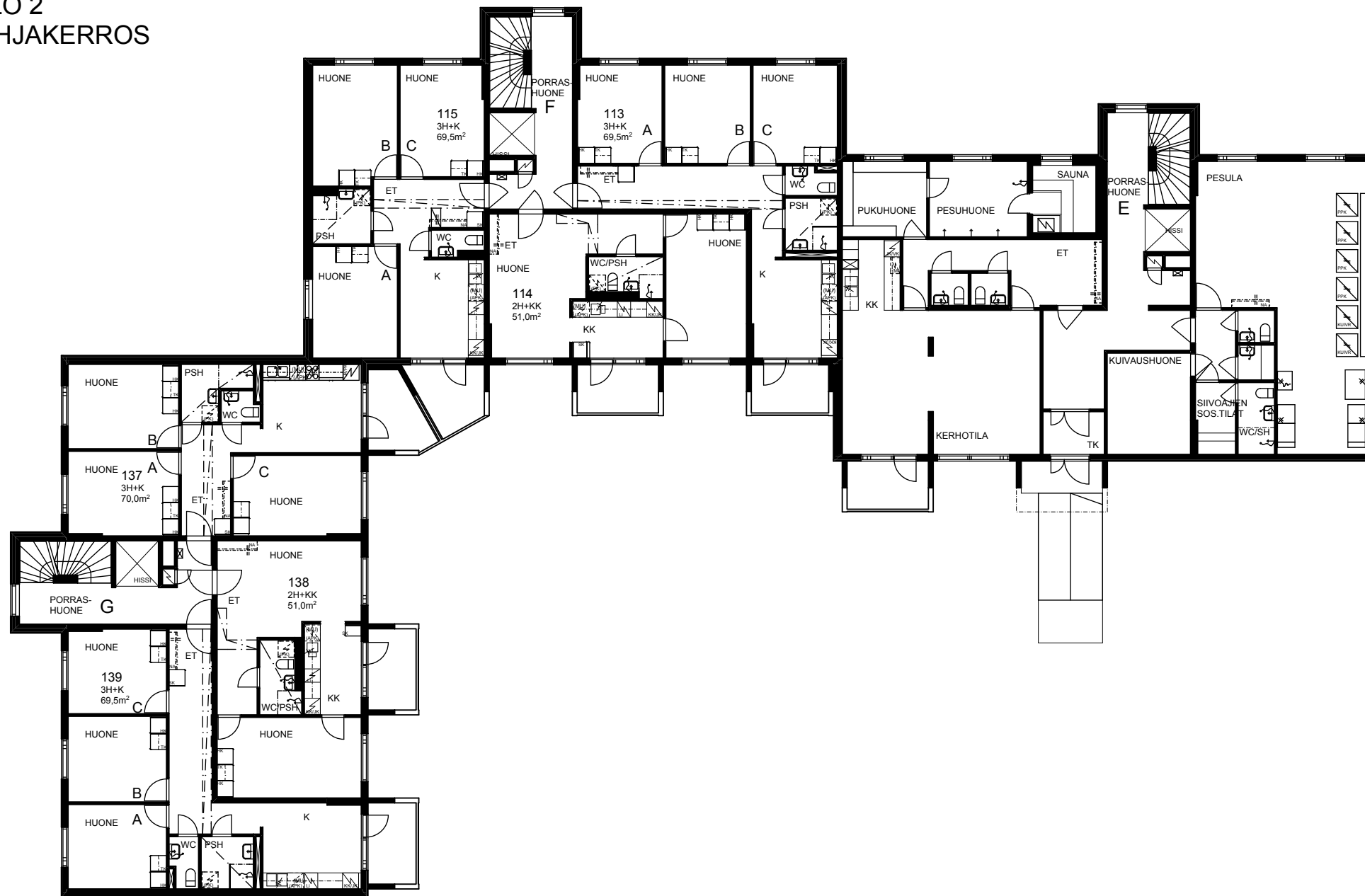
MITTAKAAVA 1:200

TOAS - PAAWOLA
TALO 2
KELLARIKERROS



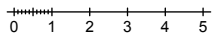
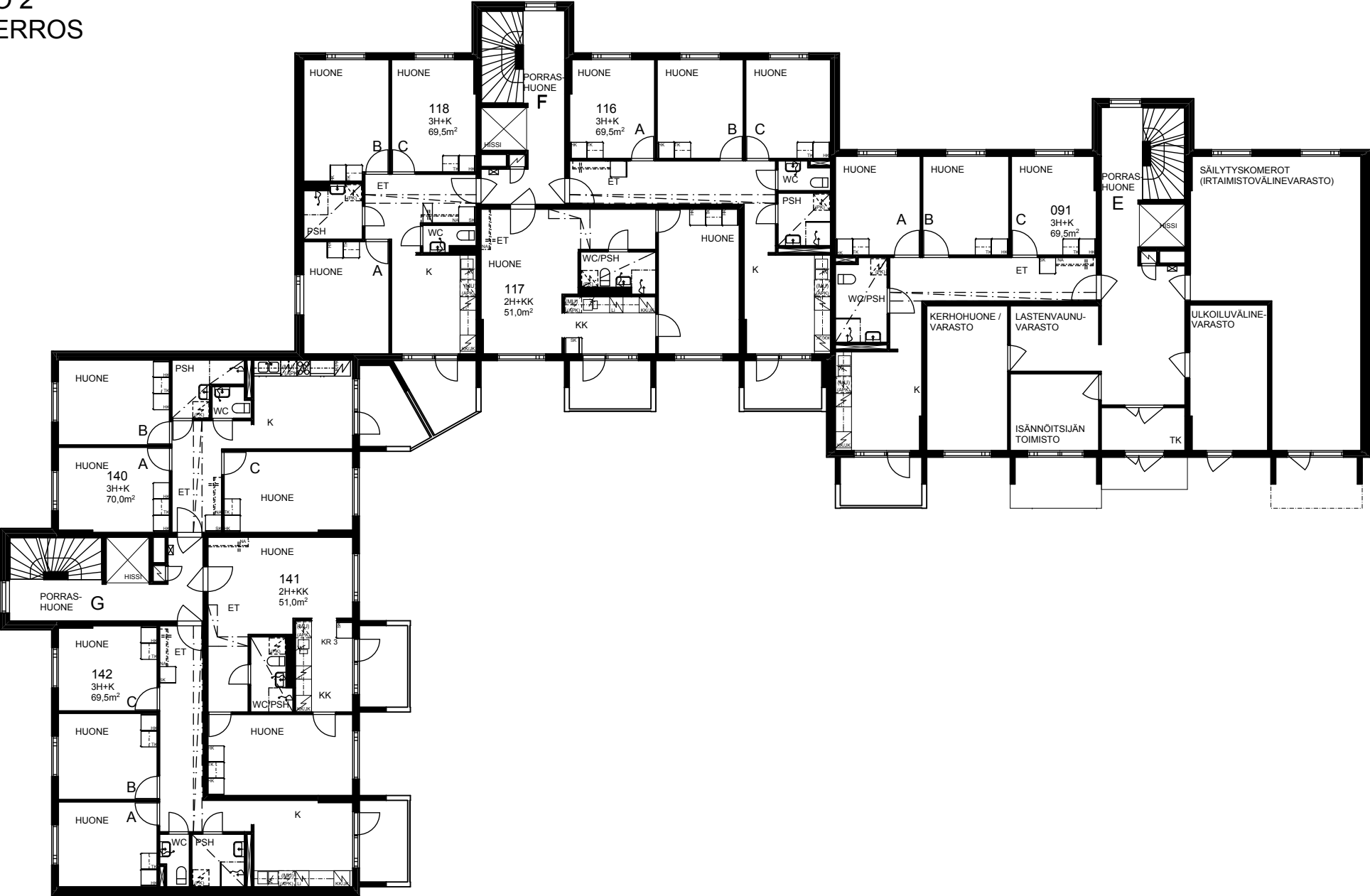
MITTAKAAVA 1:200

TOAS - PAAWOLA
TALO 2
POHJAKERROS



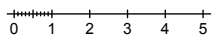
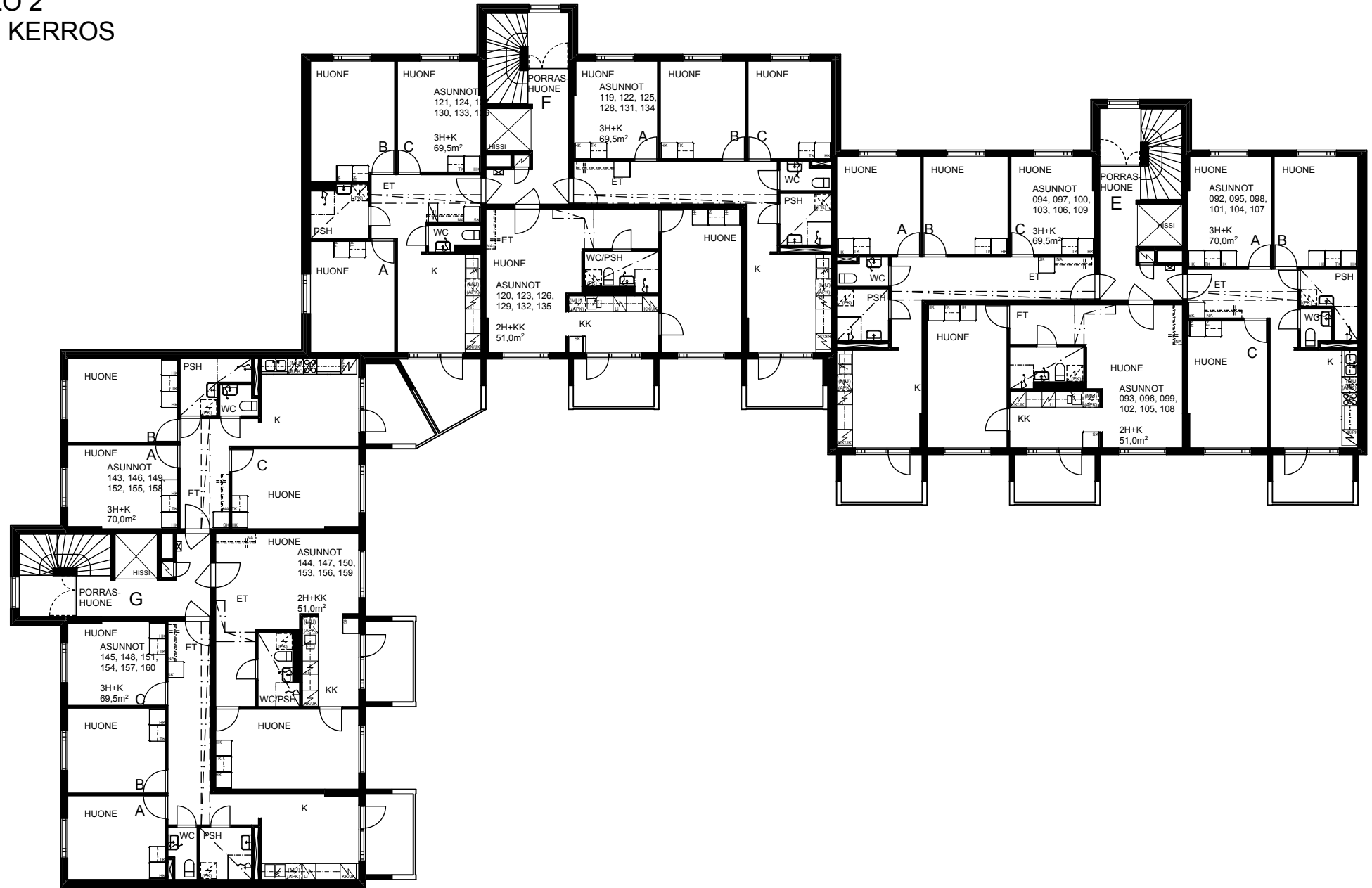
MITTAKAAVA 1:200

TOAS - PAAWOLA
TALO 2
1. KERROS



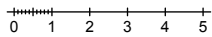
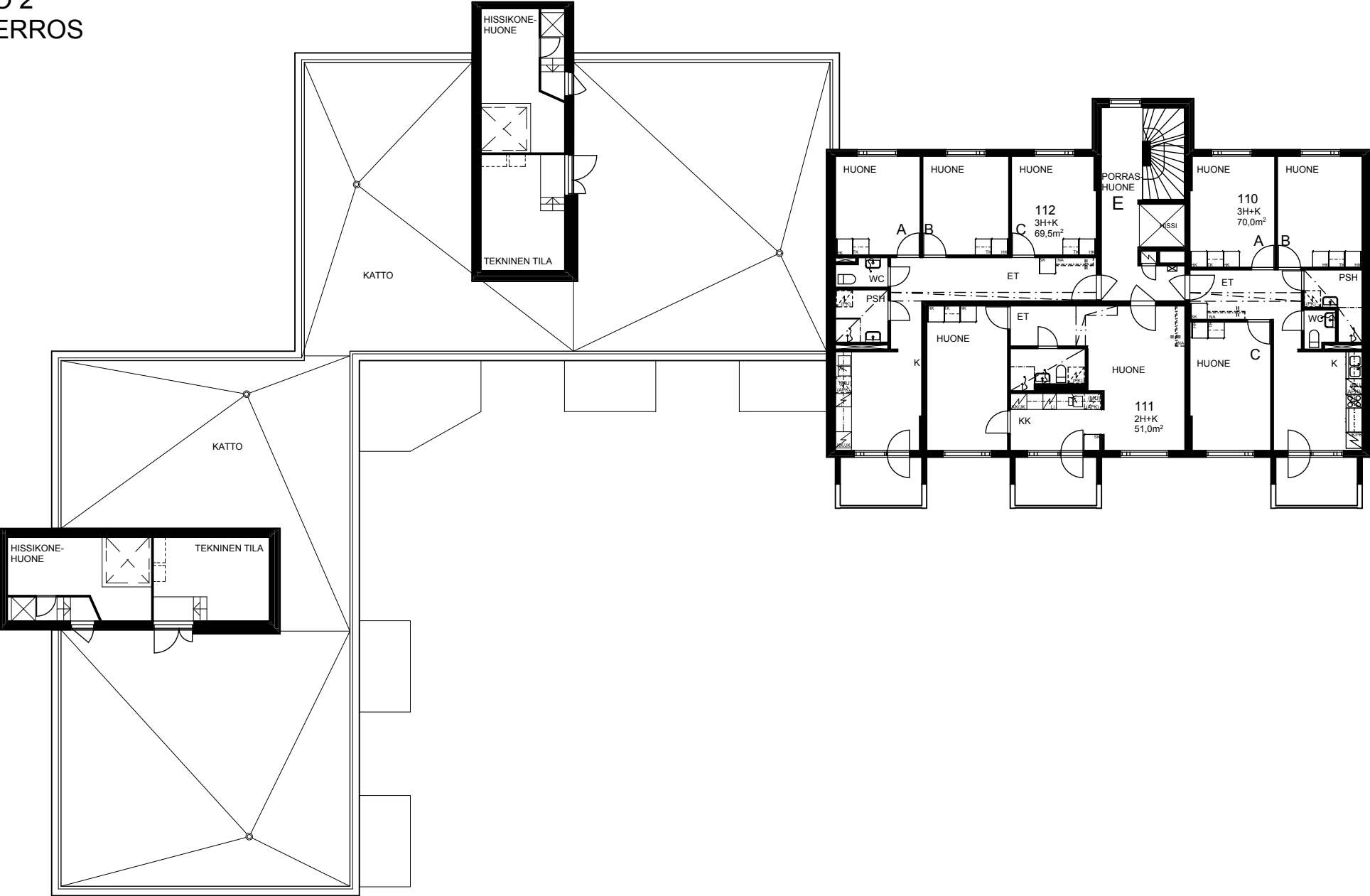
MITTAKAAVA 1:200

TOAS - PAAWOLA
TALO 2
2-7. KERROS



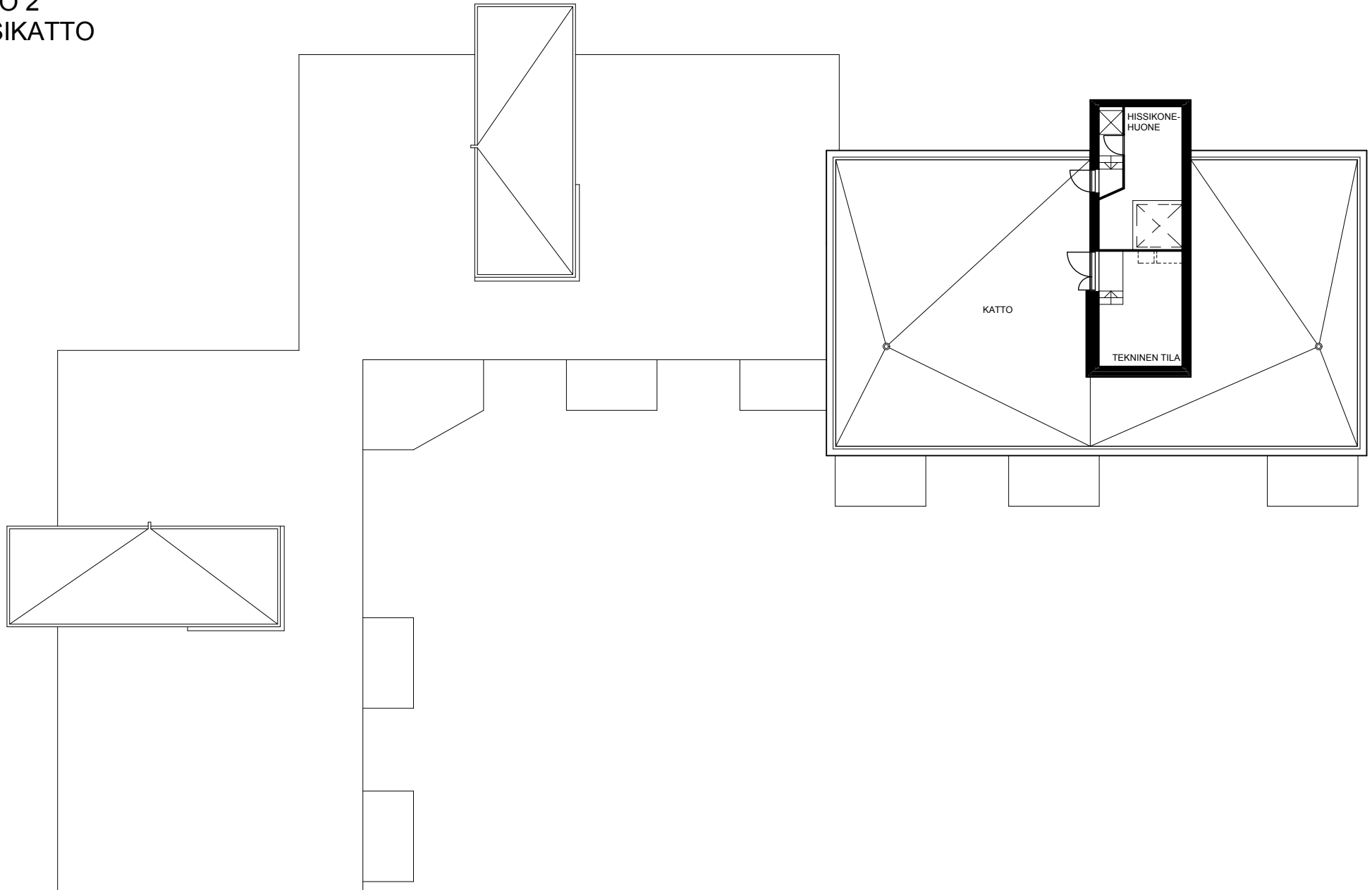
MITTAKAAVA 1:200

TOAS - PAAWOLA
TALO 2
8. KERROS



MITTAKAAVA 1:200

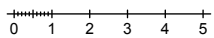
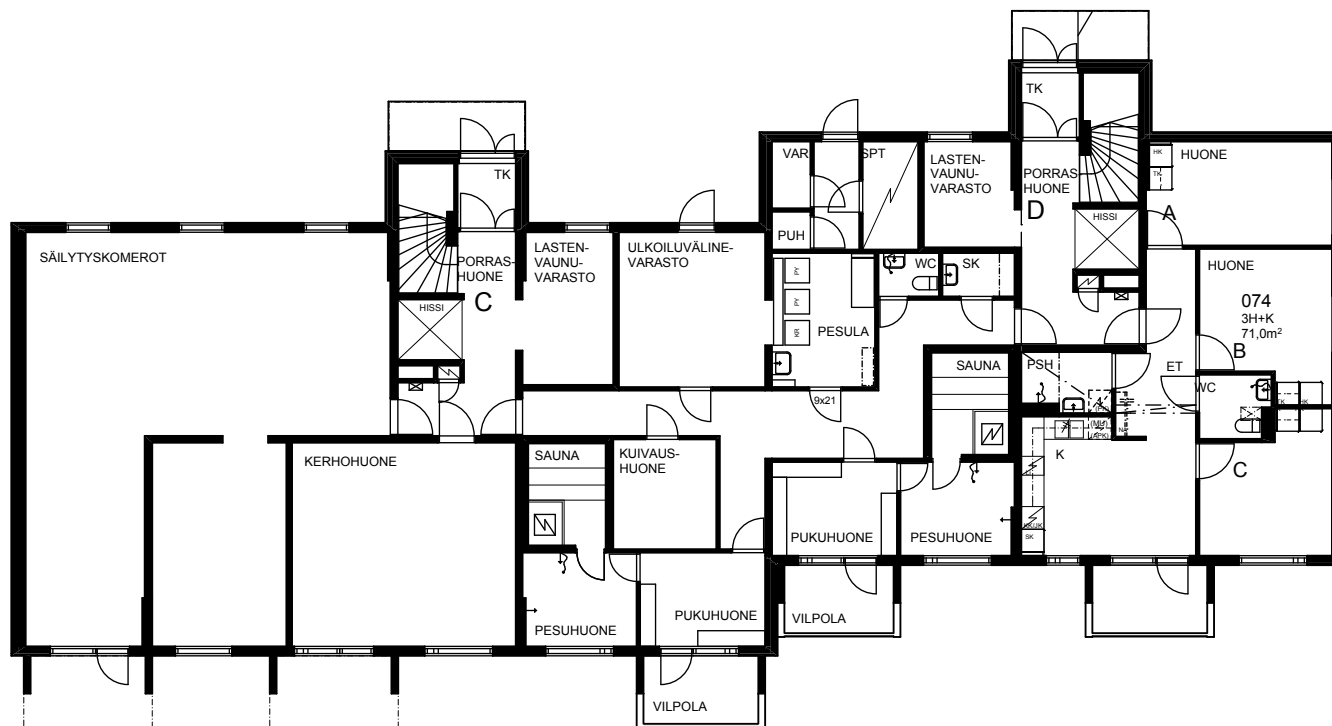
TOAS - PAAWOLA
TALO 2
VESIKATTO



0 1 2 3 4 5

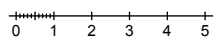
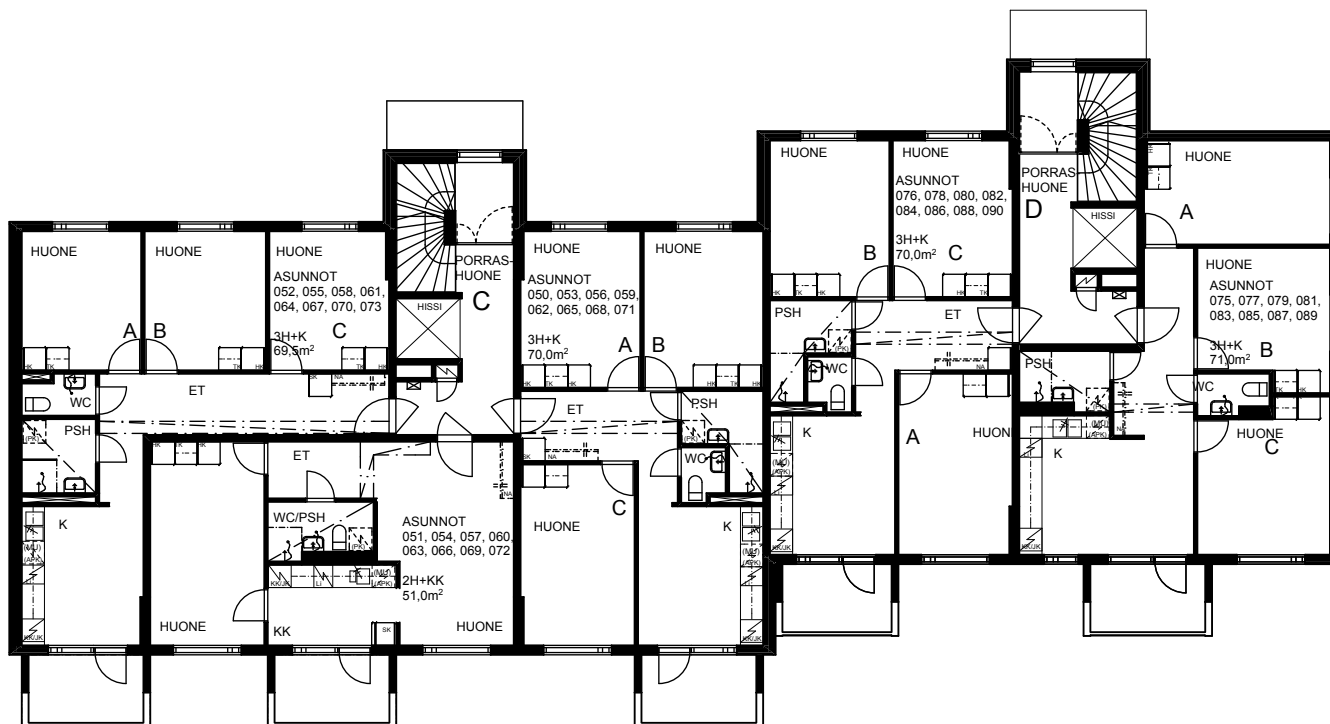
MITTAKAAVA 1:200

TOAS - PAAWOLA
TALO 3
POHJAKERROS



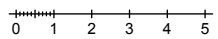
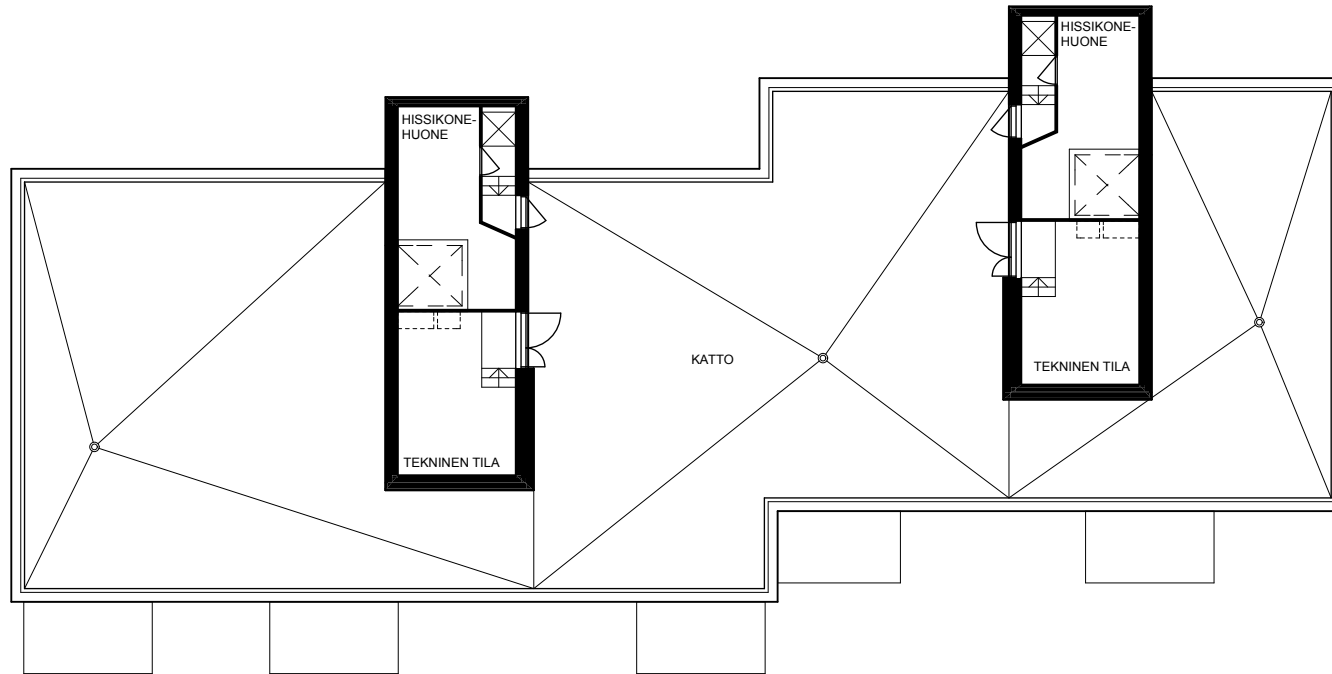
MITTAKAAVA 1:200

TOAS - PAAWOLA
TALO 3
1-8. KERROS



MITTAKAAVA 1:200

TOAS - PAAWOLA
TALO 3
VESIKATTO



MITTAKAAVA 1:200